



MONTHLY MEMBERSHIP PROGRESS REPORT

District 2 X3

Results as of: 10/31/2015

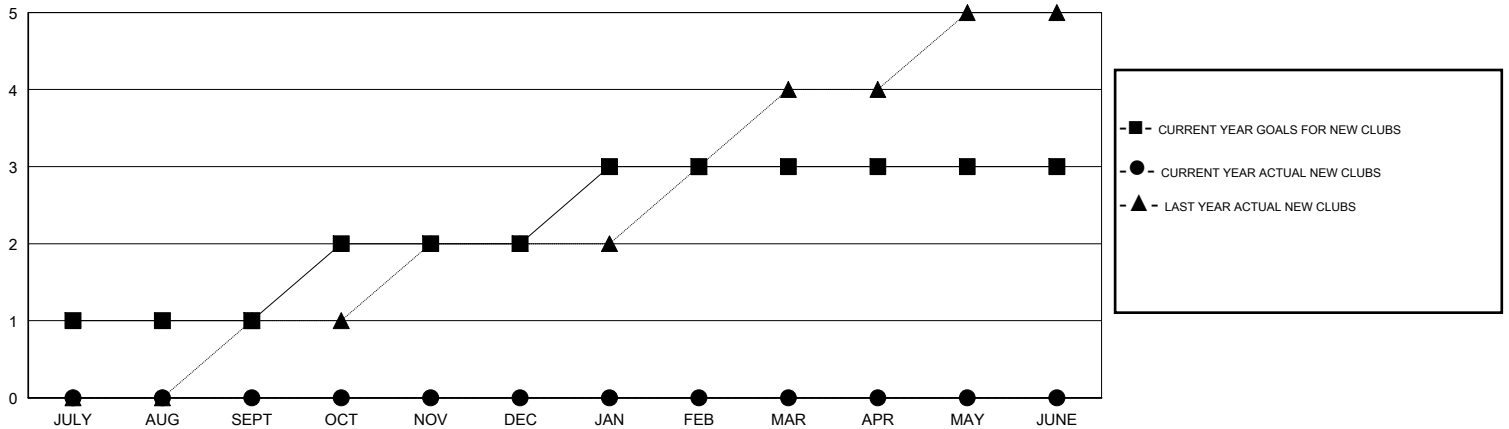
GMT: HAL GRIFFIN

LOCATION TEXAS

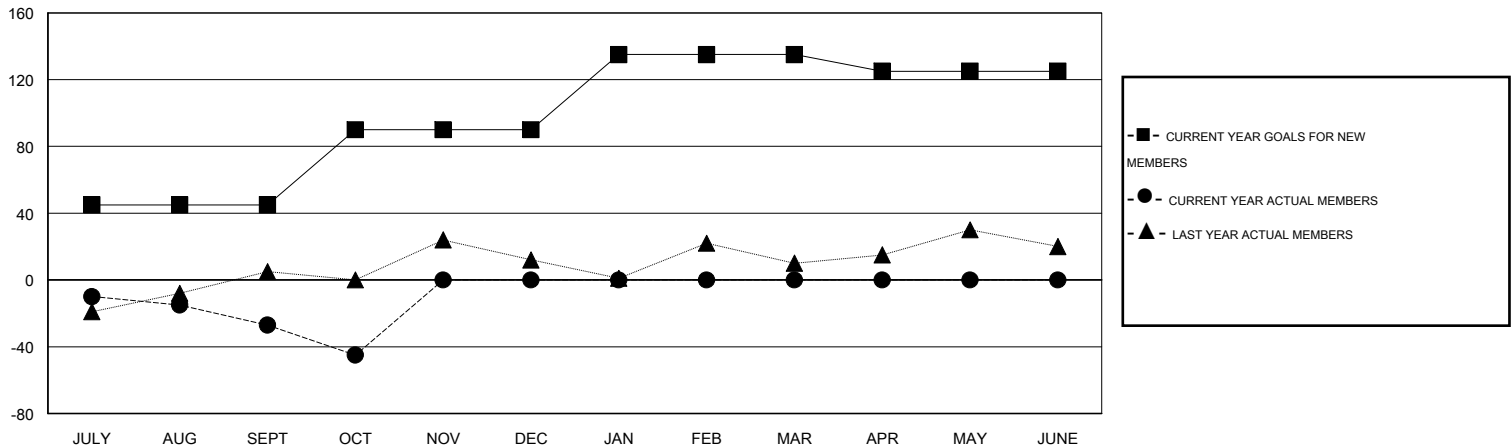
GMT CA 1

Clubs					Members				
RESULTS FOR 2015-2016					RESULTS FOR 2015-2016				
QUARTER	NEW CLUB GOAL	NEW CLUBS	DROPPED CLUBS	NET GAIN/LOSS	QUARTER	NEW MEMBER GOAL	CHARTER AND NEW MEMBERS ADDED	DROPPED MEMBERS	NET GAIN/LOSS
JULY/AUG/SEPT	1	0	0	0	JULY/AUG/SEPT	45	59	86	-27
OCT/NOV/DEC	1	0	1	-1	OCT/NOV/DEC	45	15	33	-18
JAN/FEB/MAR	1	0	0	0	JAN/FEB/MAR	45	0	0	0
APR/MAY/JUNE	0	0	0	0	APR/MAY/JUNE	-10	0	0	0

GOALS AND ACTUAL NEW CLUBS CUMULATIVE



GOALS AND ACTUAL MEMBERS CUMULATIVE



DROPPED CLUBS: 1	24 CLUBS OF 60 ADDED 1 OR MORE NEW MEMBERS	<u>GENDER DISTRIBUTION</u>	
<u>DROPPED MEMBERS</u>		MALE	1,099 (66.40%)
DECEASED	CLICK HERE FOR HEALTH ASSESSMENT DATA	FEMALE	556 (33.60%)
CLUB CANCELLED		FAMILY UNIT MEMBERS	211
OTHER		HEAD OF HOUSEHOLD	105
TOTAL		NON-HEAD OF HOUSEHOLD	106